

# T9 REV

Per escavatori 2.5-12.0 ton / For excavators 2.5-12.0 ton

TRINCIATRICI IDRAULICHE  
HYDRAULIC MULCHERS



T9 70 REV	
T9 MZ90 REV	
T9 MZ105 REV	



**HF3**  
Ø max 8 cm

di serie  
standard equipment



**KF3**  
Ø max 6 cm

T9 FR90 REV	
T9 FS90 REV	
T9 FR105 REV	
T9 FS105 REV	



**HF7 (FR90)**  
**HF8 (FR105)**  
Ø max 12 cm



**HF17 (FS)**  
Ø max 12 cm

T9 DF90 REV	
T9 DF105 REV	

**MZ**



**FS**



**DF**



**FR**











**HF14**  
Ø max 25 cm

di serie  
standard equipment



**HF15**  
Ø max 20 cm

Modello Model	 (ton)	 (cm)	 (LxAxH cm)	 Kg	Cilindrata motore Motor displacement	 (L/min)	 bar (min-max)		Rotore Rotor	
T9 70 REV	2.5-4.0	70	85x80x60	180	11-16	20-30	170-220	2	elicoidale helical	10
T9 MZ90 REV	5.0-8.0	90	105x80x60	260	22-27-34	40-50-60	170-220	3	elicoidale helical	14
T9 MZ105 REV	6.0-12.0	105	125x80x60	310	22-27-34-44-51	40-50-60 80-90	200-220	3	elicoidale helical	16
T9 FR90 REV	6.0-8.0	90	105x80x60	300	27-34-44-51	50-60 80-90	200-220	3	4 file 4 lines	18
T9 FS90 REV	6.0-8.0	90	105x80x60	330	27-34-44-51	50-60 80-90	200-220	3	elicoidale helical	18
T9 FR105 REV	6.0-12.0	105	125x80x60	360	27-34-44-51	50-60 80-90	200-220	3	4 file 4 lines	22
T9 FS105 REV	6.0-12.0	105	125x80x60	400	27-34-44-51	50-60 80-90	200-220	3	elicoidale helical	22
T9 DF90 REV	6.0-12.0	90	105x80x60	400	27-34-44-51	50-60 80-90	200-220	3	elicoidale helical	24
T9 DF105 REV	6.0-12.0	105	125x80x60	490	27-34-44-51	50-60 80-90	200-220	3	elicoidale helical	30

#### CARATTERISTICHE TECNICHE E DOTAZIONI STANDARD

- MZ Rotore elicoidale con mazze bonificate e coltelli intercambiabili.
- FR Rotore forestale a flange con mazze a scomparsa.
- FS rotore forestale elicoidale con mazze a scomparsa.
- DF Rotore forestale a denti fissi.
- Trasmissione a cinghie trapezoidali dentate ad alte prestazioni.
- Cofanatura interna a doppia cassa con intercapedine.
- Protezione carter cinghie.
- Trinciatrice simmetrica per un taglio più veloce con la rotazione dell'escavatore.
- Bocche d'ingresso e d'uscita completamente identiche.
- Frontalini regolabili, apribili meccanicamente per una maggiore capacità di taglio.
- Slitte d'appoggio regolabili su 3 posizioni per variare l'altezza di taglio.
- Supporti rotore interni con labirinto per la protezione dei cuscinetti dalle impurità.
- Cuscinetti rotore a doppia corona di sfere orientabili di prima qualità.
- Blocco valvole comprensivo di valvola prioritaria per regolazione della portata olio, antiurto (valvola di max pressione), anti-cavitazione.
- Motore ad ingranaggi in ghisa.
- Protezioni antinfortunistiche con catene a norma CE.

#### TECHNICAL FEATURES AND STANDARD EQUIPMENT

- MZ Helicoidal Rotor with austempered hammers and cutting blade interchangeable.
- FR Forestal flanged rotor with 360° rotating hammers.
- FS Helical forestal rotor with 360° rotating hammers.
- DF Forestal rotor, fixed teeth.
- Toothed high-performance V-belts transmission.
- Internally reinforced double-case body with interspace.
- Protective belts cover.
- Symmetric shearing head, for a faster cut with the rotation of the excavator.
- Input and output mouths completely identical, adjustable
- Adjustable hood, fully openable for higher cutting capacity.
- Side skids adjustable on 3 positions to change the height of the cut.
- Inside Rotor Supports with "labyrinth" for the protection of the bearings from the impurities.
- Double Row spherical adjustable bearings of 1st quality.
- Valves block complete with priority valve for adjusting oil flow, anti-shock valve (pressure relief valve), anti-cavitation.
- Cast iron gear motor.
- Accident prevention chains protections according to EC directives.

#### ACCESSORI

- 1 - Attacco sella a perni 1.2-4.0 ton.
- 1 - Attacco sella a perni 4.1-8.0 ton.
- 1 - Attacco sella a perni 8.1-12.0 ton.
- 2 - Kit tubi Lg. 2 metri 70/90G2.
- 2 - Kit tubi Lg. 2 metri MZ/FR/DF.
- 3 - Rullo di appoggio.
- 4 - Supporto autolivellante (+40kg).
- 5 - Ralla girevole idraulica (senza autolivellante).
- 6 - Detrazione blocco valvole, solo anticavitazione.

#### ACCESSORIES

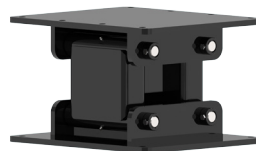
- 1 - Mounting hitch & pins 1.2-4.0 ton.
- 1 - Mounting hitch & pins 4.1-8.0 ton.
- 1 - Mounting hitch & pins 8.1-12.0 ton.
- 2 - Hoses kit Lg. 2 meters 70/90G2.
- 2 - Hoses kit Lg. 2 meters MZ/FR/DF.
- 3 - Feeler roller.
- 4 - Self-levelling support (+40kg).
- 5 - Hydraulic rotation device ( not self-levelling support).
- 6 - Valves block deduction, only anticavitation.



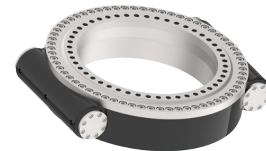
1



3



4



5